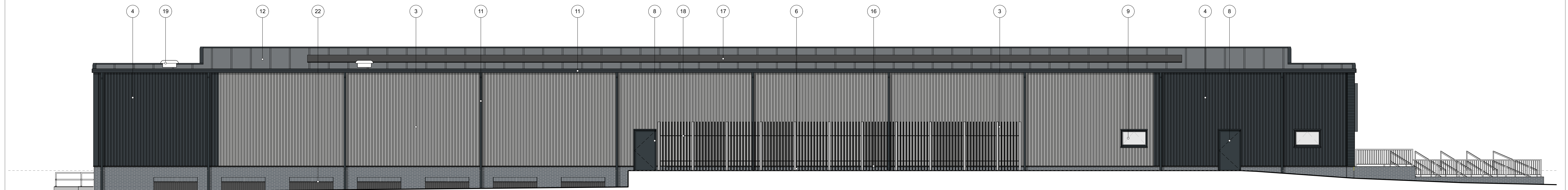
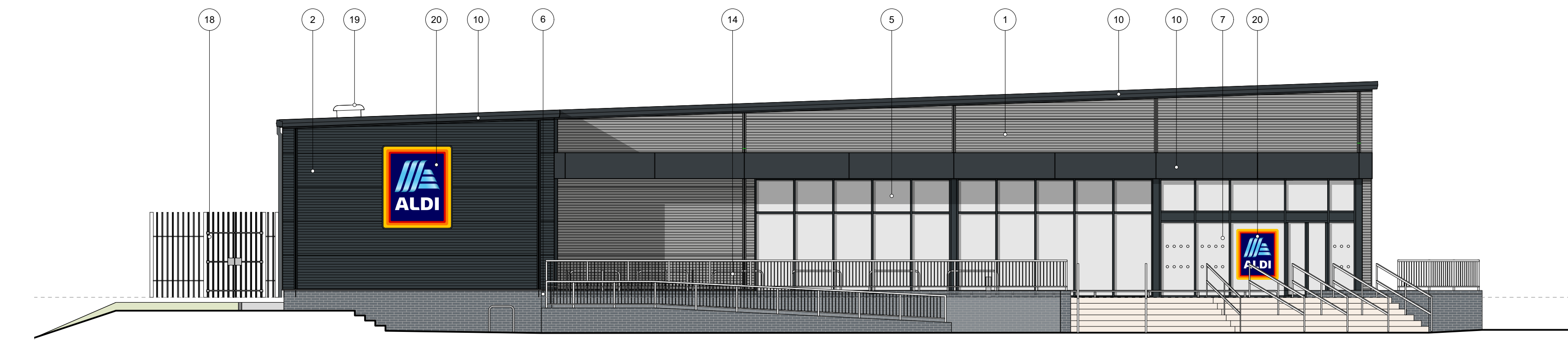




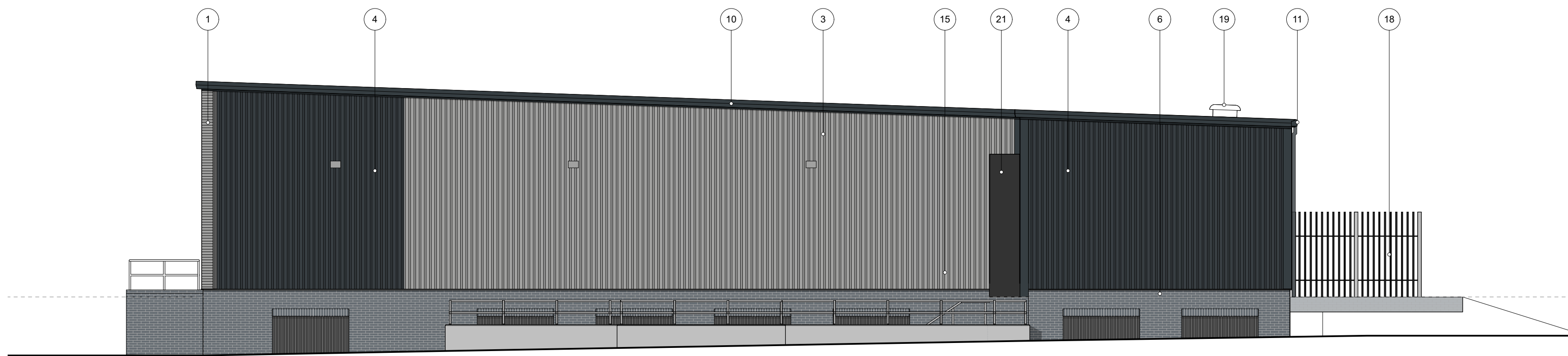
WEST ELEVATION



EAST ELEVATION



NORTH ELEVATION

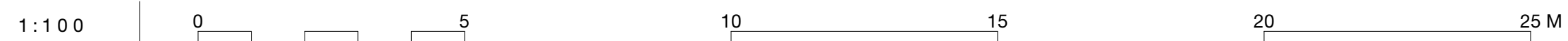



SOUTH ELEVATION

**EXTERNAL FINISHES**

1. KINGSPAN KS1000MR METALLIC SILVER CLADDING RAL 9006 (NOTE: USE ON ALL CUSTOMER FACING ELEVATIONS).
  2. KINGSPAN KS1000MR ANTHRACITE GREY CLADDING RAL 7016 (NOTE: USE ON ALL CUSTOMER FACING ELEVATIONS). SHOPFRONTS - POLYESTER POWDER COATED ALUMINIUM (RAL 7016).
  3. KINGSPAN KS1000RW METALLIC SILVER CLADDING RAL 9006 (NOTE: NON-CUSTOMER FACING ELEVATIONS ONLY).
  4. KINGSPAN KS1000RW ANTHRACITE GREY CLADDING RAL 7016 (NOTE: NON-CUSTOMER FACING ELEVATIONS ONLY).
  5. SHOPFRONTS - POLYESTER POWDER COATED ALUMINIUM (RAL 7016).
  6. BLOCKLEYS BRICK LTD. 'SMOOTH BLACK' BRICKWORK WITH TARMAC Y14 (BLACK) COLOURED MORTAR.
  7. ENTRANCE - POLYESTER POWDER COATED ALUMINIUM (RAL 7016 ANTHRACITE).
  8. STEEL ESCAPE DOORS - POLYESTER POWDER COATED COLOUR GREY (RAL 7016) (FRAME COLOUR RAL 7016).
  9. WINDOWS - POLYESTER POWDER COATED ALUMINIUM (RAL 7016).
  10. FASCIAS - POWDER COATED ALUMINIUM TO BS6496 RAL 7016
  11. RAINWATER GOODS POLYESTER POWDER COATED ALUMINIUM (RAL 7016).
  12. KINGSPAN KS1000TD (TopDeck) 71mm (CORE) THICKNESS COMPOSITE ROOF PANELS ON PURLINS. ALL TO ANTHRACITE GREY RAL 7016.
  13. SECTIONAL OVERHEAD DOOR - PVF COATED STEEL (RAL 7016).
  14. TROLLEY BAY RAILS - SATIN FINISH STAINLESS STEEL.
  15. HANDRAILS - GALVANISED TUBULAR STEEL.
  16. PVF2 COATED ALUMINIUM PRESSED DRIP FLASHING. COLOUR METALLIC SILVER RAL 9006.
  17. PHOTOVOLTAIC SOLAR PANEL ARRAY - INDICATIVE ONLY. EXACT NUMBER & POSITIONING TO SPECIALIST DESIGN DETAILS
  18. 2.4m HIGH GALVANISED PALISADE FENCE TO REFRIGERATION ENCLOSURE WITH A LOCKABLE DOOR BY THE METAL WORK CONTRACTOR.
  19. AIR INTAKE AND EXTRACT ROOF COWLS
  20. LOGO SIGN - SUBJECT TO SEPARATE ADVERTISEMENT CONSENT APPLICATION
  21. COLLAPSIBLE CURTAIN DOCK SHELTER. FINISH COLOUR BLACK
  22. OPENING INTO UNDER SLAB VOID. REMOVABLE PROTECTION BARS PROVIDED. GALVANISED STEEL FINISH
- NOTE ALL GUARD RAILS AND HAND RAILS TO ENTRANCE STEPS AND RAMPS TO BE STAINLESS STEEL FINISH

08





**Kendall Kingscott**  
Chartered Architects  
Chartered Building Surveyors  
Interior Designers  
CDM Services



Project: Aldi Winnersh, Gazelle Close  
Client: Aldi Stores Ltd  
Site: Glenworth Court, Lime Kiln Close, Stoke Gifford, Bristol BS34 5SR  
+44 (0)117 951 2062  
www.kendallkingscott.co.uk  
© Copyright

Revision	Date	By	App	Note
P2	19/12/2022	MW/MS		Below slab voids added. Ground levels adjusted. Annotations and elevation titles corrected.
P1	06.12.22	MW/MS		Drawing Issue
Drawing Title: <b>PROPOSED ELEVATIONS</b>				
Project Number	Drawing Number	Revision		
	<b>201057-1400</b>	<b>P2</b>		
Scale	Project Size	Revision	Drawn	Checked
1:100	ISO A1	Winnersh Elevations v2021 v2022.vwx Nov 2022	MW	MS
Check all dimensions and levels on site				

Only to be used on the site for which designed. The electronic transmission of design information contained in this drawing is carried out entirely at the User's risk and Kendall Kingscott Ltd. will have no liability for any errors or omissions arising therefrom. The production of amended or updated information from the said design information by the User is entirely the responsibility of the User and Kendall Kingscott Ltd. shall have no responsibility in respect thereof whatsoever.

This page is intentionally left blank